



INSTALLATION

CLUTCH AND BRAKE LEVERS/GL 1800 7435

PARTS INCLUDED

- 1 Brake Side Lever with Bushing
- 1 Clutch Side Lever with Bushing
- 1 Installation Instructions

Please read and understand entire instructions before starting installation.

THANK YOU FOR CHOOSING KÜRYAKYN!

IN ORDER TO PROTECT YOU AND OTHERS FROM POSSIBLE INJURY AND/OR PROPERTY DAMAGE OR LOSS, PLEASE PAY CLOSE ATTENTION TO ALL INSTRUCTIONS, WARNINGS, CAUTIONS AND ATTENTION NOTES REGARDING THE USE AND CARE OF THIS PRODUCT.

WARNING! THIS INDICATION ALERTS YOU TO THE FACT THAT IGNORING THE CONTENTS DESCRIBED HEREIN CAN RESULT IN POTENTIAL DEATH OR SERIOUS INJURY.

ATTENTION! This indication alerts you to the fact that ignoring the contents described herein may negatively affect product performance and functionality.

CAUTION! This indication alerts you to the fact that ignoring the contents described herein can result in potential injury or material damage.

TOOLS SUGGESTED

Flat Blade Screwdriver, Set of Combination Wrenches, Grease

STRICTLY OBSERVE THE FOLLOWING GUIDELINES IN ORDER TO USE THE PRODUCT PROPERLY AND AVOID POTENTIALLY DANGEROUS ACCIDENTS.

STEP 1 Read and understand all steps in the instructions before starting the installation. Park the motorcycle on a hard, level surface and turn off the ignition.

BRAKE SIDE

STEP 2 Using a flat tip screwdriver and a combination wrench, remove the stock brake lever from the motorcycle. Place a dab of grease on the pivot screw and install the custom lever in the same manner the stock one was removed. Tighten the pivot screw securely. Test for free unrestricted operation.

WARNING! CHECK BRAKE LIGHT FUNCTION BEFORE OPERATING MOTORCYCLE.

CUSTOMER SERVICE

877.370.3604 (toll free)

INSTALLATION QUESTIONS

techsupport@kuryakyn.com
or call 715.247.2983

LIMITED WARRANTY

Kuryakyn warrants that any Kuryakyn products sold hereunder, shall be free of defects in materials and workmanship for a period of one (1) year from the date of purchase by the consumer excepting the following provisions:

- Kuryakyn shall have no obligation in the event the customer is unable to provide a receipt showing the date the customer purchased the product(s).
 - The product must be properly installed, maintained and operated under normal conditions.
 - Kuryakyn makes no warranty, expressed or implied, with respect to any gold plated products.
 - Kuryakyn shall not be liable for any consequential and incidental damages, including labor and paint, resulting from failure of a Kuryakyn product, failure to deliver, delay in delivery, delivery in nonconforming condition, or for any breach of contract or duty between Kuryakyn and a customer.
- Kuryakyn products are often intended for use in specific applications. Kuryakyn makes no warranty if a Kuryakyn product is used in applications other than intended.
- Kuryakyn electrical products are warranted for one (1) year from the date of purchase by the consumer. L.E.D.'S contained in components of Kuryakyn products will be warranted for defects in materials and workmanship for 3 years from the date of purchase where as all other components shall be warranted for one(1) year. This includes, but is not limited to; control modules, wiring, chrome & other components.
- Kuryakyn makes no warranty of any kind in regard to other manufacturer's products distributed by Kuryakyn. Kuryakyn will pass on all warranties made by the manufacturer and where possible, will expedite the claim on behalf of the customer, but ultimately, responsibility for disposition of the warranty claim lies with the manufacturer.

ABOUT OUR CATALOG

For purchasing Kuryakyn® products, you can receive a complete catalog free of charge.

Send the Proof-of-Purchase below with your address to: Kuryakyn, P.O. Box 339, Somerset, WI 54025.

Please indicate either Accessories Catalog for Harley-Davidson® or GL & Metric Cruisers.

Be sure to ask your local dealer about other Kuryakyn® products, the motorcycle parts and accessories designed for riders by riders.

©2005 Kuryakyn USA® All Rights reserved.

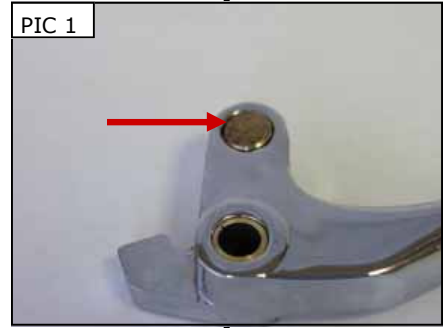


kuryakyn.com

-cont.-

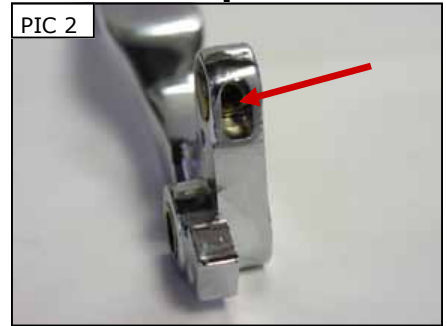
7435-21GL-0911

CAUTION! As a safety precaution, we recommend testing to be certain the front brake is not dragging. To do this you may need the help of a friend. With a small jack or lift, elevate the front wheel off the ground. Spin the front wheel; it should spin freely for a couple of revolutions. If it moves with noticeable resistance or seems to stick or bind, the brakes are dragging and one should go back and review the installation to determine the cause of this brake drag before the motorcycle is operated.



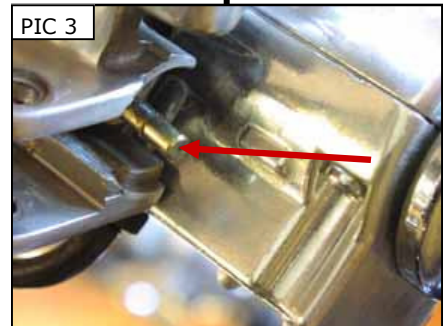
CLUTCH SIDE

STEP 3 Remove the pivot screw from the clutch lever. Carefully pull the lever free from the control housing. Hold your hand under the control housing because a small brass ferrule will probably drop from it — this could easily be lost.



STEP 4 Apply grease to the small clutch ferrule, and insert it into the custom clutch lever as shown in PIC.1. The small hole in the clutch ferrule should be visible through the end of the clutch lever. See PIC.2.

STEP 5 See PIC.3. Observe the clutch master cylinder plunger pin. This pin must engage completely into the hole in the small clutch ferrule. Carefully insert the clutch lever into the housing so the pin engages as described. Apply grease to the pivot bolt and reinstall being certain the nut is tightened securely. Test for smooth unrestricted operation.



STEP 6 Test ride the motorcycle in a low traffic situation. If the clutch drags, or shifting is difficult, the plunger pin is not fully engaged into the clutch ferrule.

WARNING! IMPROPER INSTALLATION OR USE OF THIS PRODUCT COULD RESULT IN SERIOUS INJURY OR DEATH.

CAUTION! Ensure that the installation of this product does not interfere with the proper operation of the motorcycle before riding.

ATTENTION! It is the installer's responsibility to ensure that all of the fasteners (including pre-assembled) are tightened before operation of the motorcycle. Küryakyn will not issue a warranty on components lost due to improper installation. Periodic maintenance may be required.

Ride On!